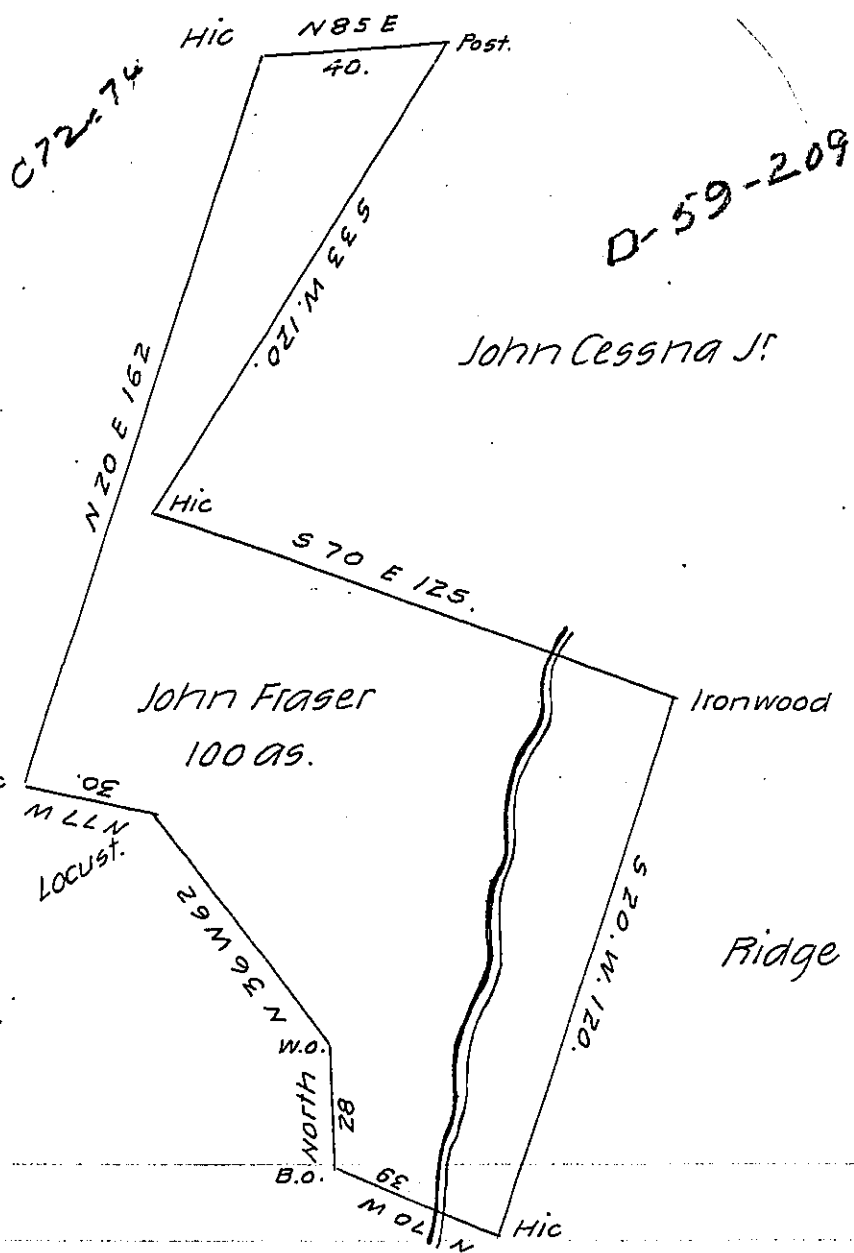


C-205-188

Will's Mountain



C-72-74

A Draft of A Tract of land Situate on Evit's Creek about 2 miles north of the Block houses in Cumberland Valley, Cumberland Valley Township Bedford County, containing one hundred Acres & allowance of Six Per cent for Roads & Lo- Surveyed in pursuance of A Warrant granted to John Fraser, dated the 9th day of June 1762.

James O'Connor D.S.

To Gabriel Heister Esqr. S.G.

IN TESTIMONY that the above is a copy of the original remaining on file in the Department of Internal Affairs of Pennsylvania, made conformably to an Act of Assembly approved the 16th day of February, 1833, I have hereunto set my Hand and caused the Seal of said Department to be affixed at Harrisburg, this eighth day of September 1905

*James D. Brown*  
Secretary of Internal Affairs.